



BISHOP'S WALTHAM MUSEUM

Newsletter for the Friends of the Museum Spring 2018 Issue 24

Thank you and best wishes for the future!

A message from our retiring Chairman,
Georgie Busher

This will be my last Chairman of Trustee's letter to you as I am retiring at the AGM in April. I feel it is time for someone new to take over, with fresh ideas. I have been a Trustee since John Bosworth appointed me when he, ably assisted by Betty Hiscock, ran the Museum in the scullery at the back of Barclay's Bank, and subsequently in the bigger kitchen as well. Sadly he died soon after we moved into the bigger room, and shortly after the whole building was sold, and the rent, which had been a peppercorn, rose to commercial heights, which of course we could not afford.

We were then lucky enough to reach agreement with English Heritage and moved into bigger premises at the Palace. By this time Anita and the late Bruce Taylor had rallied a group of friends who nobly trudged across the main road with all our exhibits in boxes, and the new exhibition was set up in the kitchen of the farmhouse, and eventually moved into the upstairs room as well.

Since then the Museum has prospered, and thanks to Anita and her team, and an army of volunteers, and a Committee who were all subsequently appointed Trustees, much has been achieved. We hold regular exhibitions, which are very well attended by both local residents and visitors, we have been able to extend our opening hours thanks to an influx of new volunteers, and we have a

CONTENTS:

Message from the Chairman	1
Time of Change	2
Behind the scenes	2
The child's carriage – what next?	4
The Museum's website	4
Becoming a CIO	5
Museum AGM agenda	6
"That was fun"	6
Membership	6
Our Friends and Volunteers	7
The 'Malt Lane' site	8

comprehensive archive of photographs of Bishop's Waltham, ancient and modern, a lot of which come from John Bosworth's own collection. Our greatest achievement has been to gain Accreditation, thanks to the hard work of Anita and the vice-Chairman Julian Malec and others.

Now we are moving on again, with a new Chairman, a new Mentor, and new proposals and plans for the future.

I have been immensely proud to have been Chairman of Trustees of the Museum, and to have watched its growing success over the years. I thank you all for all your hard work: Anita, Trustees, all the volunteers whether they are welcoming visitors, cataloguing artefacts or arranging exhibitions and rotas, or clarifying new legislation. I am sure the Museum will continue to thrive. It has become an integral part of Bishop's Waltham life and a major tourist attraction in the District. I wish you all continued success and the very best of luck.

Time of Change

By Trish Simpson-Davis

This year's Museum's exhibition focuses on the work of John Bosworth in researching, collecting and photographing Bishop's Waltham.

Recently I was shown an 1887 photo of the High Street party held to mark Queen Victoria's Golden Jubilee. John's own later shots date from 2004 – an impressive time span for one man's collection of some 5,000 images, some not yet even catalogued.

Possibly the most prescient strand in John's work are the 'before and after' shots. In his files (available in the farmhouse kitchen) he has paired pictures which show green fields or large houses swallowed into housing estates, demonstrating how the village expanded to become a small town, particularly in the 1960s and 1970s. The most emotive shots of all record the demolition of medieval buildings in Red Lion and Houchin Streets, and the Palace stables.

After having talked to D-Day contributors from 2014, I've become even more curious about Bishop's Waltham as it was before mains drainage arrived and roads were built across the Great Pond. We are lucky here in Bishop's Waltham to have many people who were born and bred in the locality and can remember back to the 1950s. We also have an efficient and unobtrusive recorder donated by Portsmouth Museums. As we enter another period of change for Bishop's Waltham, it seems important to record as much as we can for coming generations.

So, the next Oral History project is to interview as many folk as we have time to visit before the end of 2018, to ask about the mod cons in their homes, what they got up to as teenagers and how the village changed around them in the period 1950-1980. This information will complement what we have already gleaned from John's work. If you would like to be a contributor, then we would

love to add you to our growing list. As always, the interviews will be transcribed to make them accessible in written form (so if anyone wants to help by typing up the recording, a very time-consuming task, please let me know!).

Hopefully, the end result will call, in considerable depth, on both John's work and the real-life memories of his peers, in a 'Time of Change' Exhibition for 2020.

You can contact Trish at trish.simpson-davis@outlook.com

STOP PRESS

THE JOHN BOSWORTH EXHIBITION

Do you have any friends or relatives born around 1937 in Bishop's Waltham?

Trish is still trying to answer three remaining questions about John Bosworth's life:

1. Where did he go to school after he left Linden House in Waltham Chase?
2. Where was his father's tobacconist shop?
3. Was working at his Dad's shop John's first job?

Any information gratefully received at the email address above! Thank you...

Behind the scenes

By the Museum's Registrar,
Anita Taylor

The winter has been very harsh for the poor volunteers at the museum. As I am writing, the temperature in the kitchen is 5.2° C, far too cold to do any work, so Pete and Jenny have taken work home.

Not being able to write about work "Behind the scenes", I have searched the archives to try to find something topical instead and spotted the proposed Malt Lane development. The planned

development is on the site of the Youth Hall, NHS hut and Fox's. John meticulously recorded all the changes to Station Road and the Palace Outer Court when the by-pass was built and I will attempt to do the same and add to his legacy with 'before', 'during' and 'after' photos.

The Malt Lane area was part of the Palace grounds, bounded by the Palace on the south, the pond on the west and the River of the Lord to the north and the east. The Palace stables, also known as Robinson's Yard, was demolished in August 1967 to make space for the re-alignment of the A333 (now the B2177).

An archaeological survey at the time shows that the site has been occupied since the Mesolithic period and interesting artefacts such as a costrel (a kind of medieval flask) were discovered.



Rooke's shop near Abbey Mill in 1907

What is now Fox's Garden Machinery was Rooke's garage. P.W. Rooke is believed to have started his business at Pondsides Lane, before moving to a building beside Abbey Mill around 1902 (see above). The business then moved to Station Road, occupying both sides of the road.

The premises had started in 1899 as a bicycle shop. In 1901 he began selling motorcycles. P.W. Rooke drove his first private car at about this time and in 1906 started a car hire business. He told an Echo reporter, "I can certainly claim to be one the pioneer motorists in Hampshire and undoubtedly the first motorist in Bishop's Waltham."

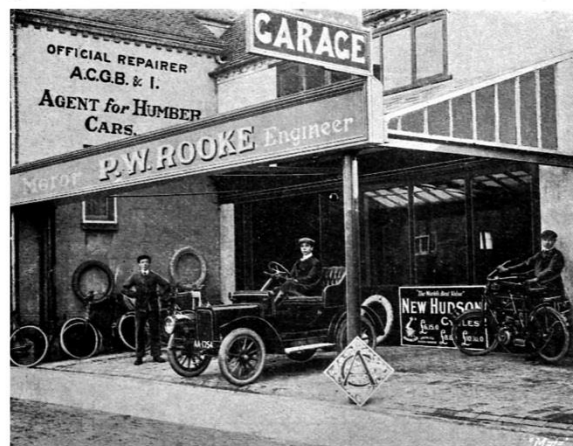
P. W. Rooke, MOTOR & CYCLE ENGINEER, **BISHOP'S WALTHAM.**

Works and Garage:—**STATION ROAD.**

Official Repairer to the Automobile Club
— of Great Britain and Ireland. —

**MICHELIN TYRES
STOCKED.**

Vulcanizing, Petrol, Greases, Oils, etc.



Cars for Hire. Cycle Repairs.

Agent for New Hudson, Rover, Triumph, Centaur and Humber Cycles. District Agent for Humber Cars.

Mr Rooke lived in Wych Elms, where the Youth Hall is now. We don't have many photos of the house. It stood back from station road and had a gravel drive, and a large garden. An aerial photograph of about 1930 shows that it had a tennis court. The house was demolished in the 1960s.

If you are interested in the history of Station Road, John has created a folder, which can be consulted at the museum. His research and his legacy to the town will be celebrated this summer with an exhibition of his life and work through his photos and testimonies of those who knew him.

This year, we will also be working in partnership with the Bishop's Waltham Photographic Society and holding an exhibition of photographs taken in Bishop's Waltham. I am also hoping to put together a display of cameras and equipment. There are some very good photographers in the Club and I wonder if some of the members would one day carry on John's legacy of taking pictures of the changes to Bishop's Waltham.

The child's carriage

By Gill Atkins

Your winter newsletter included a passage about the dilapidated Edwardian baby or child's carriage in our collection and our plans to look into improving the state of the item.

Kate Gill, a conservator recommended to us by our Museum Development Officer, visited the museum in December 2017 and met with the Registrar and the Secretary. She examined the carriage with care, explaining that it is in a pretty poor condition and discussing with us the value of the item to the community. In January of this year she sent us a very thorough report of her findings and recommendations. Kate recommends thorough cleaning and a minimum of repair work rather than complete restoration.



At the end of the day the carriage will not look a great deal different but the work carried out should conserve what remains of the carriage and prevent further deterioration. With the local provenance of the pram and the interest shown by many of our visitors, this work seems very worthwhile. Kate recommended including the carriage in a small display about its history and the history of prams in general, perhaps with a small child's toy pram alongside it that children visiting the museum could handle and play with.

The trustees have discussed the report but have yet to reach agreement. The work will be expensive. While the donation so kindly made by Avril Lee Smith and her friends and family would certainly go some way to meet the cost, we may need to raise further funds if we are to go ahead with the project.

Avril took an active part in the community of Bishop's Waltham. She and Ian were stewards at weekends until shortly before Avril's death in 2015.

The Museum website

By Gill Atkins

The museum's improved website is now live. The Webmaster welcomes suggestions for improvements or notifications of any errors you may find. It should be easy to access but please let us know if you are having a problem. We will endeavour to keep it up to date.



The next important date for your diary is Thursday 26th April. This is the date of our Annual General Meeting which will be held at Jubilee Hall Bishops Waltham in the Ruby Room at 7.30 pm. **See the AGM agenda and other details on page 6.**

On the following Saturday afternoon the Museum will be open to all our friends/members. You will be the first to see our new 2018 exhibition.

Details of our past exhibitions can be found on the website.

www.bishopswalthammuseum.net

Becoming a Charitable Incorporated Organisation

By Julian Malec

Five years ago the Charitable Incorporated Organisation (CIO) was introduced by Parliament to give charities the legal capacity to do many things in its own name that a person could do, such as:

- employing paid staff
- delivering charitable services under contractual agreements
- entering into commercial contracts in its own name
- owning freehold or leasehold land or other property

If a charity structure is a corporate body set up as a CIO, generally its Trustees aren't personally financially liable for what it does. Becoming a CIO absolves the Trustees from the Trust's debt, provided, and this is a big proviso, that the Trustees have done their best for the charity, and have not been negligent in performing their role as Trustees.

Bishop's Waltham Museum is a Charitable Trust, run today by 11 volunteer Trustees. Currently the Trust pays for an insurance policy so that in the event of a third party claim against it, the Trust (and hence the Trustees) would be covered, provided that the Trust and Trustees had not been negligent.

In the past year the Trustees have considered the implications of the Trust becoming a CIO, and after discussion, decided to work towards that end. Under the Charity Commission there are two types of CIO appropriate to our Museum, namely the Foundation model and the Association model. In the Foundation model the Trustees are solely responsible for running the charity. The Trustees are the only voting members.

This would mean that Friends of the Museum would no longer have a vote in how the Museum would be run, (unless they themselves decided to join the Trustees). It is stressed that Friends would still pay a vital role in the support and care of the Museum, but they would not be voting members. In the Association model the Trustees are supported by voting members who are not necessarily themselves trustees.

After taking advice from those who have already gone down this road, the Bishop's Waltham Museum Trustees decided that the appropriate CIO for Bishop's Waltham Museum Trust would be the Foundation model, and so decided that an application to the Charity Commission to effect the change should be prepared.

At the AGM in the Jubilee Hall at 7.30 on 26th April 2018 the Trustees will seek approval to make Bishop's Waltham Museum Trust a Foundation model CIO. If the AGM approves the change, (and we really hope it does), formal application will be made. It is not a quick process and it could take many weeks before the Trustees hear whether the application has been successful, or if more work needs to be done.

The CIO will have a strict Constitution which is very similar to the existing Museum Trust Constitution, dated 18 March 2009, but it will have the necessary safeguards written in.

The Museum Trustees seek your help in achieving this change, by attending the AGM and voting for the Trust to become a Foundation model Charitable Incorporated Organisation. If you have any questions or concerns about the change, please contact any of the Trustees, who will be only too pleased to help you.



**CHARITY COMMISSION
FOR ENGLAND AND WALES**

Museum Trust's AGM

**Notice of
Annual General Meeting
to be held on
Thursday 26th April 2018
7.30pm at the Ruby Room
in the Jubilee Hall**

Agenda

1. Chairman's Welcome
2. Apologies for Absence
3. Minutes of the last meeting and matters arising
4. Chairman's Report
5. Honorary Treasurer's report and adoption of the Accounts for 2017
6. Registrar's Report
7. Administrative Report
 - a. Volunteers
 - b. Membership
8. Election of the Committee
9. Short presentation on proposed new Constitution. Members vote on its adoption.
10. Any Other Business
11. Chairman's Closing Remarks
12. A short break for tea or coffee

This will be followed by an illustrated talk by Tony Kippenberger, Chairman of the Bishop's Waltham Society and a Museum Trustee, entitled: **Carved Graffiti in Bishop's Waltham**



Do you know where this 1757 carving is? You may well walk past it frequently! Come and find out.

"That was fun"

By Gill Williams

The Bishop's Waltham Beavers Troup spent a summer's evening at the Museum last year, enjoying the quiz devised for the "Shopping in Bishop's Waltham" exhibition and honing their powers of observation. It was combined with a treasure hunt and although most of the lads had visited the site before, very few had been in the Museum. Not a lad thing?



The verdict at the end of the session was "can we do it again?" as learning is fun! I just hope they brought their families and friends with them over the summer to look again at the Museum and the lovely Exhibition.

Penny Copeland who designed the Exhibition provided the quizzes for young people (and adults) to engage visitors with it – including some Maths questions!

A date for your diary... On Sunday 24th June, the Town Team is taking over the High Street for 'KidSTreat' – an event specially designed for kids aged 3-13 years. The museum will be one of the many stand holders.

Membership

By Gill Atkins

Attached to this newsletter is a copy of our membership form. **We very much hope you will continue to be a member.**

This year, in line with the 2018 EU General Data Protection Regulation, we

are requesting that you complete the section giving us your consent to securely store your personal information. This will only be used for us to make contact with you.

The regulation comes into force at the end of May and supersedes the UK Data Protection Act of 1998. It expands the rights of individuals to control how their personal information is collected and processed, and places a new obligation on organisations to be more accountable for data protection.

Our Friends and Volunteers

By Julian Malec

Bishop's Waltham Museum is supported and run entirely by volunteers. Without volunteers who give their time and enthusiasm and their skills, there would be no Museum. It is as simple as that.

The Museum structure has four broad groups of volunteers. The first volunteer group are the "Friends of Bishop's Waltham Museum". You who are reading this newsletter are one of these valuable people who support the Museum by paying an annual membership fee. Many Friends take on one or more of the roles of the volunteers outlined below, to enable the Museum to continue to function. Today the Museum has about 60 Friends.

Second, our Registrar, Anita Taylor, and her small team are all volunteers who have catalogued, and are continuing to catalogue, the large number of artefacts and many thousands of photographs that the museum holds. This group usually meet together each Wednesday morning in the Museum, (often defying the cold in the unheated building). They also arrange any special exhibitions held in the Museum. This very skilled and demanding work continues throughout the year.

Third, are the volunteers who have been given training to meet the visitors, and make sure the visitors and the Museum are properly looked after when the Museum is open, (at weekends and bank holidays from May to September). This too is skilled and very responsible work. Volunteers normally work in two hour shifts and typically might be on duty in the Museum about once a month, more or less, depending on their wishes. The rota of duty is compiled and run by another volunteer, Dawn Woodsford. Currently the Museum has approximately 20 people on the rota.

The fourth group of volunteers are the Trustees who have accepted the responsibility for the conduct of the Museum, making sure it is run properly, and that the finances are kept in order in accordance with Charity Law. The Trustees meet regularly about every three months. Today there are 11 Trustees.

The Museum needs continual regeneration to ensure new ideas and new energy. This can be achieved by increasing the number of Friends, who might then volunteer in one or more of the ways outlined above. If you, as a valued Friend, know someone who might be interested in becoming a supporter and volunteer by joining the Friends, please put them in touch. It is easy. Just contact Dawn Woodsford on 01489 894640 or 07746 810 969.

Current Trustees: March 2018

Georgina Busher – Chairman
Julian Malec – Vice Chairman
Anita Taylor – Registrar
Gill Atkins – Secretary
David Warren – Treasurer
Dawn Woodsford – Volunteer Co-ordinator

Penny Copeland
Tony Kippenberger
Gill Williams
Hans Wolf
Josie Wood (representing the Parish Council)

The 'Malt Lane' site

By Tony Kippenberger

On page 3 Anita Taylor, our Registrar, has mentioned the Malt Lane area. As she says, this is the land between Budgen's and St George's Square that is currently occupied by Fox's Garden Machinery, the Youth Hall and the NHS's Elms Hut.

Many of you will know that a developer – Country Homes – has been working on plans for a large-scale development on this site that, for the last 25 years and more, has been a blighted part of Bishop's Waltham and an unlovely view of the town for passing motorists.

The plans are for 28 apartments, five retail outlets and new premises for both the Youth Club and the NHS. Many have been concerned by the height and mass of the proposals (see illustration below) as well as inadequate parking provision.

Historic England stated in its objection of 9th March 2018 that "Any development that exceeds the largely single storey height of the existing buildings, has the potential to impact on the scheduled monument and how it is experienced... An increase to three storeys, and moving buildings further forward to the road edge, as in the current proposal, would result in further increased visibility from within the scheduled area, and an increased level of harm to the significance of the monument and the visitor experience of it."

Penny Copeland, a Museum Trustee, has written to Winchester City Council (WCC) about parking: "There is insufficient car parking for the development. There are minimal numbers of car parking spaces

for the flats and shops, and the Youth Hall and NHS facility are expected to share 5 spaces - what happens when they are both in use at the same time?... As a trustee of Bishop's Waltham Museum, I am extremely concerned that the small area of car parking for Bishop's Waltham Palace, shared with the museum during opening hours, will be used for alternative parking, preventing visitors from coming in."

On the 6th March Anita Taylor, Penny Copeland and I had the very considerable pleasure of having a site visit in the company of Elizabeth Lewis whose 1967-8 excavation work in Bishop's Waltham included the discovery of an 11th Century aisled hall under what is now Budgen's. We all agreed that the adjacent proposed development site is a critically important one.

As a consequence the Bishop's Waltham Society wrote on all our behalves to WCC pointing out that this is one of the few underdeveloped sites that can still help to reveal the town's earliest history.

We felt that a proposed archaeological 'watching brief' was not enough, nor did it do justice to the importance of the site. As Historic England noted in its comments, the buried remains could be of "equal (national) significance" to the Palace itself.

Instead we proposed that the developer commission a full geophysical study of the whole area. This would highlight what areas may be worth excavating.

STOP PRESS

It now seems this development may not go ahead after all. The developer has said that the level of changes that Winchester City Council are proposing would make it commercially unviable.

